



# Rural Communities Development International Incorporated



We will start the program shortly  
(at 1:00 pm)





Rural Communities Development International Inc.

# Rural Communities Development International Incorporated(RCDII)

---

**Open House and First Anniversary Celebration**

**December 4, 2021**

**1 - 2pm**



Rural Communities Development International Inc.

# Opening Prayer

---

**Dr. Agnes Yeboah**



Rural Communities Development International Inc.

# Welcome & Introductions

---

**Mr. Seth Osae-Aye**

# Board of Trustees



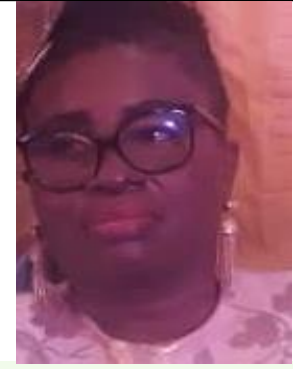
**President**  
Dr. E. Kwame Obeng



**Vice President**  
Mr. Seth Osae-Aye



**Member**  
Mrs. Linda Galbier



**Member**  
Mrs. Ohenewaa Akuamoaa-Bonsu



**Member**  
Dr. Agnes Obeng



**Member**  
Ms. Oheneba Ama Nti Osei



**Member**  
Dr. Agnes Yeboah



Rural Communities Development International Inc.

# Mission of RCDII

---

**Mr. Seth Osae-Aye**

# Mission

Provide services in support of the development of rural and urban communities in the following areas: education, health, information and communication technology (ICT) training, culture, sanitation and environmental protection.

**Major objective:** Improve the lives of residents in rural communities in Ghana and other developing countries by:

- ❖ Establishing educational institutions or construction of facilities for educational institutions
- ❖ Constructing health care facilities to provide primary healthcare with emphasis on eye health, pre-natal care and women's health
- ❖ Providing sanitation education and facilities, clean water projects and environmental preservation programs such as tree planting and solar farms to provide electricity needs for the communities.

RCDII will partner with academic institutions, faith-based organizations, local village/town development committees and other non-profit charitable organizations to accomplish these goals.



Rural Communities Development International Inc.

# History of RCDII

---

**Dr. E. Kwame Obeng**



# History of RCDII

- RCDII was founded by Dr. E. Kwame Obeng in his effort to give back to his village, Kwahu Oda.
- Dr. Obeng grew up under incredibly challenging conditions in his village (no electricity, pipe-borne water, other basic amenities)

## Ghana

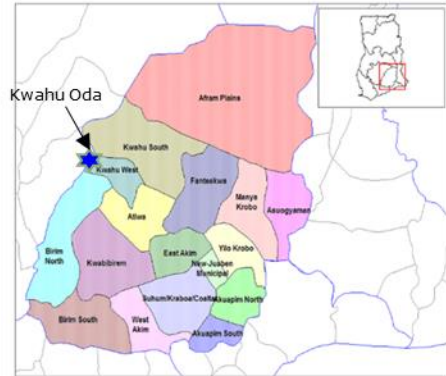


## Eastern Region



Eastern Region of Ghana

## Kwahu Oda Location



## Kwahu Oda Village



# History of RCDII

---

- RCDII was incorporated on October 16, 2020, as a US-based non-profit organization
- As of June 2021, RCDII is exempt from federal income tax under Internal Revenue Code (IRC) Section 501(c)(3).
- Donors can deduct contributions made to RCDII under IRC Section 170 effective October 16, 2020.



Rural Communities Development International Inc.

# Current Projects

---

**Dr. E. Kwame Obeng**



## Current Projects

---

- Initial focus: Kwahu Oda located in the Kwahu West district in the Eastern region of Ghana

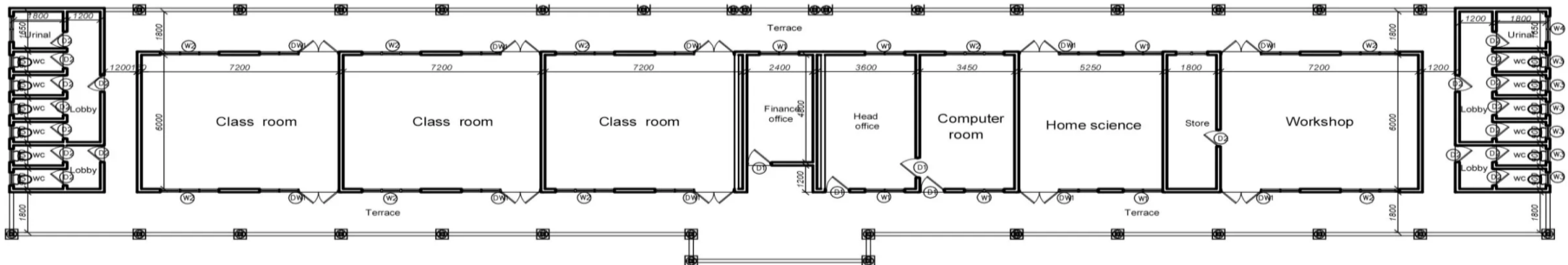
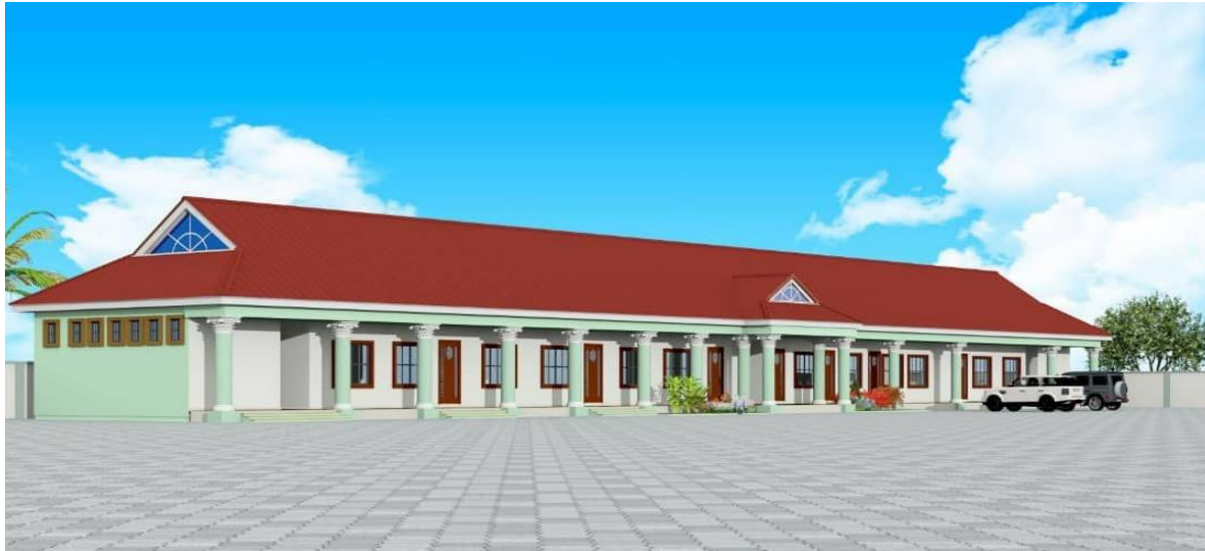
**Construction of a Junior High School building for the village of Kwahu Oda.**

Where we started from

## Current Junior High School Classroom



# Proposed School Building



# Status Update for Junior High School Construction

**June 2021**



**July 2021**

**November 2021**



# After the Construction of the Junior High School



The school will need:

- Classroom furniture and supplies
- Library books
- Computers
- Science and technology laboratory supplies
- Home science laboratory supplies





Rural Communities Development International Inc.

# Future Projects

---

**Dr. E. Kwame Obeng**

# Future Projects

---

- Construction of a Primary Healthcare Center
- Establishment of a Vocational/Technical Training Center and a Soccer Academy
- Provision of Clean Water e.g. bore holes
- Sanitation and environmental projects e.g. Planting of trees, solar farms, biogas plants



Rural Communities Development International Inc.

# Current Funding

---

**Mr. Seth Osae-Aye**

# Current Targets and Funding



## Targets

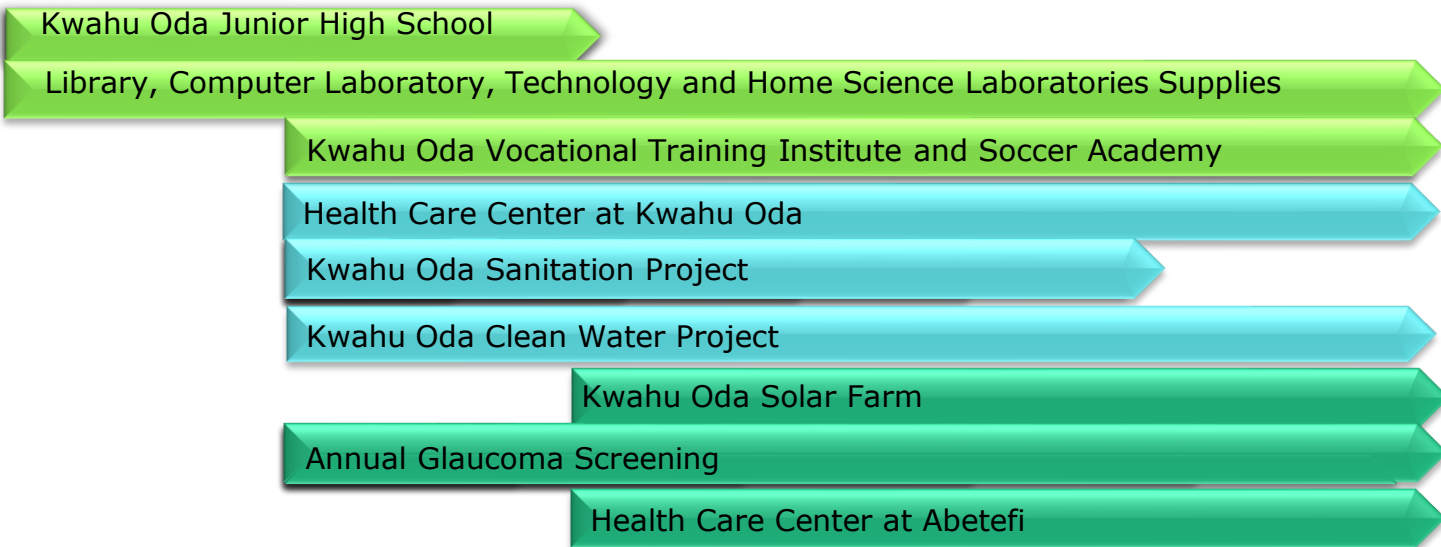
- Building Construction: \$150,000
- Furniture, Equipment, Computers and Books: \$50,000

Donors	Contribution to Date
Kwahu Oda Community	\$26,665
RCDII Contributions	<b>\$63,000</b>
<b>Total</b>	<b>\$89,665</b>

# RCDII Proposed Projects Overview (2021 -2025)



Rural Communities Development International Inc.



<b>Estimated Cost</b>	
Kwahu Oda Junior High School	\$ 200,000
Library, Computer Laboratory, Technology and Home Science Laboratories Supplies	\$ 90,000
Kwahu Oda Vocational Training Institute and Soccer Academy	\$ 450,000
Health Care Center at Kwahu Oda	\$ 350,000
Kwahu Oda Sanitation Project	\$ 40,000
Kwahu Oda Clean Water Project	\$ 60,000
Kwahu Oda Solar Farm	\$ 500,000
Annual Glaucoma Screening	\$ 80,000
Health Care Center at Abetefi	\$ 350,000



Rural Communities Development International Inc.

# Donations & Volunteer Opportunities

---

**Mr. Seth Osae-Aye**

# Donation & Volunteer Opportunities

## DONATE

1. Via PayPal at: <https://rcdii.org/donate>

2. Via Check: Mail a check made payable to

Rural Communities Development International Inc.

203 Main Street, # 614

Flemington, NJ 08822

\*\*\*Call 908-500-4933 in case of any questions

3. Grant Proposals to Philanthropies

## VOLUNTEER OPPORTUNITIES

<https://rcdii.org/getinvolved>

# Questions & Answers



Rural Communities Development International Inc.



Thank you



Rural Communities Development International Inc.